



Interactive Map

Overview

“Interactive Map” is a system that comprises points of interest shown on a map and gives the opportunity to users to extract information in multimedia content (i.e., images, video clips) and text form, by selecting these points with the touch of their fingers.

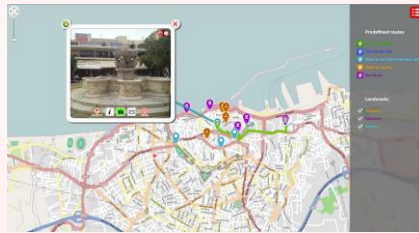
The system provides a map in high resolution, which features points of interest and offers information for each one. When the user selects a predefined point on the map, an information window appears, which may contain images, videos and a short description for the selected point.

The information window can be easily moved across the screen, while users may zoom in, zoom out or further explore the map through multitouch gestures.

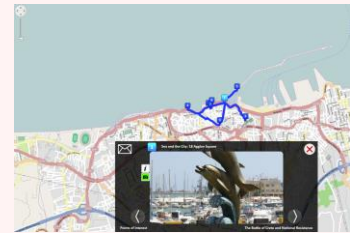
The points of interest are organized in categories, allowing users to change the displayed results on the map according to their preferences. Categories and points on the map are color coded, supporting faster information identification and retrieval, which are necessary in the intended context of use. Users can either select or unselect a category by touching on the corresponding category button.



A user interacts with the application



A hot spot selection on the map



Multimedia content of a certain point of interest

Additional Information

The system can be used to display enriched geospatial information. It can be installed in systems using large touch-enabled displays (e.g., in public spaces), or in personal devices such as smartphones and tablets.

Permanent public installations: Natural History Museum of Crete, Port Authority of Heraklion mobile electrical vehicle unit, Heraklion Port

Related video: <http://youtu.be/Jm4UBkcwnzo>



Interactive Map web page

www.ics.forth.gr/ami/project/interactive-map/

Contact details: **Constantine Stephanidis**
cs@ics.forth.gr
www.ics.forth.gr/ami